

BROOK PARK ESTATES

BEING A SUBDIVISION OF A PART OF THE NORTHEAST QUARTER (NE 1/4) SECTION 30, TOWN 7 NORTH, RANGE 20 EAST, TOWN OF BROOKFIELD, WAUKESHA COUNTY, WISCONSIN



LOCATION MAP
SECTION 30, T7N, R20E
SCALE 1"=200'



SCALE 1" = 100'

REFERENCE MERIDIAN: THE EAST LINE OF THE NORTHEAST QUARTER (NE 1/4) OF SECTION 30, T 7 N, R 20 E, WAS USED AS THE REFERENCE MERIDIAN AND HAS A BEARING OF N01°51'W (ASSUMED)

UNPLATTED REVISED THIS 9th DAY OF SEPTEMBER, 1976

LAND



LEGEND
 O INDICATES IRON PIPE 30 LONG BY 2" DIA.- 3.05+ LBS. PER LINEAL FOOT. ALL OTHER LOT CORNERS MARKED BY IRON PIPE 24" LONG BY 1" DIA.- 1.13+ LBS. PER LINEAL FOOT.

NOTES
 ALL DISTANCES HAVE BEEN MEASURED TO THE NEAREST HUNDREDTH OF A FOOT AND COMPUTED TO THOUSANDTHS OF A FOOT. ANGLES HAVE BEEN MEASURED TO THE NEAREST 15 SECONDS AND COMPUTED TO THE NEAREST SECOND.

THERE SHALL BE NO DIRECT VEHICULAR ACCESS FROM ANY LOTS TO WATERTOWN ROAD (C.H. 'SS') AND BARKER ROAD (C.H. 'V').

NO STRUCTURE OF ANY KIND SHALL BE PERMITTED WITHIN A VISION CORNER WHICH EXCEEDS 3 FEET ABOVE THE ELEVATION OF THE INTERSECTION; EXCEPT FOR NECESSARY HIGHWAY AND TRAFFIC SIGNS, PUBLIC UTILITY LINES, AND OPEN FENCES THROUGH WHICH THERE IS CLEAR VISION, NOR SHALL ANY PLANT MATERIAL BE PERMITTED WHICH OBSCURES SAFE VISION OF THE APPROACHES TO THE INTERSECTION.

UNPLATTED

BROOK PARK ESTATES

BEING A SUBDIVISION OF A PART OF THE NORTHEAST QUARTER (NE 1/4), SECTION 30, TOWN 7 NORTH, RANGE 20 EAST, TOWN OF BROOKFIELD, WAUKESHA COUNTY, WISCONSIN

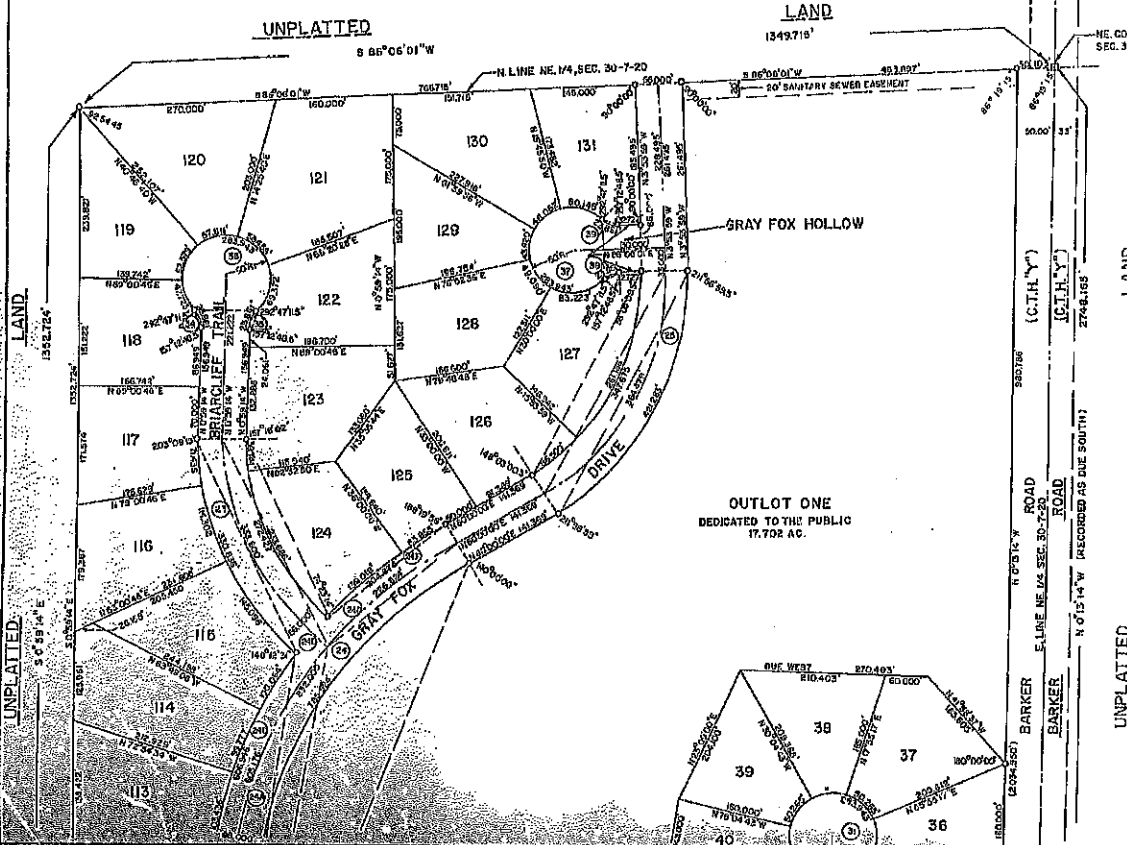


Richard F. Janke
Surveyor
August 1, 1975
REVISED THIS 30 DAY OF SEPTEMBER, 1975



CURVE NO.	ARC	CHORD	MAIN CURVE DATA			RADIUS	TANGENT BEARING	CURVE ARC CHORD	
			CHORD BEARING	GENERAL ANGLE	DEFLECTION ANGLE				
1.1	102.432	254.460	N 56° 50' 14" W	62° 35' 50"	5,179.000	245.257	S 62° 45' 54" W	1,102.227	1,001.100
1.2	102.432	254.460	N 56° 50' 14" W	62° 35' 50"	5,179.000	245.257	S 62° 45' 54" W	1,102.227	1,001.100
1.3	102.432	254.460	N 56° 50' 14" W	62° 35' 50"	5,179.000	245.257	S 62° 45' 54" W	1,102.227	1,001.100
1.4	102.432	254.460	N 56° 50' 14" W	62° 35' 50"	5,179.000	245.257	S 62° 45' 54" W	1,102.227	1,001.100
1.5	102.432	254.460	N 56° 50' 14" W	62° 35' 50"	5,179.000	245.257	S 62° 45' 54" W	1,102.227	1,001.100
1.6	102.432	254.460	N 56° 50' 14" W	62° 35' 50"	5,179.000	245.257	S 62° 45' 54" W	1,102.227	1,001.100
1.7	102.432	254.460	N 56° 50' 14" W	62° 35' 50"	5,179.000	245.257	S 62° 45' 54" W	1,102.227	1,001.100
1.8	102.432	254.460	N 56° 50' 14" W	62° 35' 50"	5,179.000	245.257	S 62° 45' 54" W	1,102.227	1,001.100
1.9	102.432	254.460	N 56° 50' 14" W	62° 35' 50"	5,179.000	245.257	S 62° 45' 54" W	1,102.227	1,001.100
1.10	102.432	254.460	N 56° 50' 14" W	62° 35' 50"	5,179.000	245.257	S 62° 45' 54" W	1,102.227	1,001.100
1.11	102.432	254.460	N 56° 50' 14" W	62° 35' 50"	5,179.000	245.257	S 62° 45' 54" W	1,102.227	1,001.100
1.12	102.432	254.460	N 56° 50' 14" W	62° 35' 50"	5,179.000	245.257	S 62° 45' 54" W	1,102.227	1,001.100
1.13	102.432	254.460	N 56° 50' 14" W	62° 35' 50"	5,179.000	245.257	S 62° 45' 54" W	1,102.227	1,001.100
1.14	102.432	254.460	N 56° 50' 14" W	62° 35' 50"	5,179.000	245.257	S 62° 45' 54" W	1,102.227	1,001.100
1.15	102.432	254.460	N 56° 50' 14" W	62° 35' 50"	5,179.000	245.257	S 62° 45' 54" W	1,102.227	1,001.100
1.16	102.432	254.460	N 56° 50' 14" W	62° 35' 50"	5,179.000	245.257	S 62° 45' 54" W	1,102.227	1,001.100
1.17	102.432	254.460	N 56° 50' 14" W	62° 35' 50"	5,179.000	245.257	S 62° 45' 54" W	1,102.227	1,001.100
1.18	102.432	254.460	N 56° 50' 14" W	62° 35' 50"	5,179.000	245.257	S 62° 45' 54" W	1,102.227	1,001.100
1.19	102.432	254.460	N 56° 50' 14" W	62° 35' 50"	5,179.000	245.257	S 62° 45' 54" W	1,102.227	1,001.100
1.20	102.432	254.460	N 56° 50' 14" W	62° 35' 50"	5,179.000	245.257	S 62° 45' 54" W	1,102.227	1,001.100
1.21	102.432	254.460	N 56° 50' 14" W	62° 35' 50"	5,179.000	245.257	S 62° 45' 54" W	1,102.227	1,001.100
1.22	102.432	254.460	N 56° 50' 14" W	62° 35' 50"	5,179.000	245.257	S 62° 45' 54" W	1,102.227	1,001.100
1.23	102.432	254.460	N 56° 50' 14" W	62° 35' 50"	5,179.000	245.257	S 62° 45' 54" W	1,102.227	1,001.100
1.24	102.432	254.460	N 56° 50' 14" W	62° 35' 50"	5,179.000	245.257	S 62° 45' 54" W	1,102.227	1,001.100
1.25	102.432	254.460	N 56° 50' 14" W	62° 35' 50"	5,179.000	245.257	S 62° 45' 54" W	1,102.227	1,001.100
1.26	102.432	254.460	N 56° 50' 14" W	62° 35' 50"	5,179.000	245.257	S 62° 45' 54" W	1,102.227	1,001.100
1.27	102.432	254.460	N 56° 50' 14" W	62° 35' 50"	5,179.000	245.257	S 62° 45' 54" W	1,102.227	1,001.100
1.28	102.432	254.460	N 56° 50' 14" W	62° 35' 50"	5,179.000	245.257	S 62° 45' 54" W	1,102.227	1,001.100
1.29	102.432	254.460	N 56° 50' 14" W	62° 35' 50"	5,179.000	245.257	S 62° 45' 54" W	1,102.227	1,001.100
1.30	102.432	254.460	N 56° 50' 14" W	62° 35' 50"	5,179.000	245.257	S 62° 45' 54" W	1,102.227	1,001.100
1.31	102.432	254.460	N 56° 50' 14" W	62° 35' 50"	5,179.000	245.257	S 62° 45' 54" W	1,102.227	1,001.100
1.32	102.432	254.460	N 56° 50' 14" W	62° 35' 50"	5,179.000	245.257	S 62° 45' 54" W	1,102.227	1,001.100
1.33	102.432	254.460	N 56° 50' 14" W	62° 35' 50"	5,179.000	245.257	S 62° 45' 54" W	1,102.227	1,001.100
1.34	102.432	254.460	N 56° 50' 14" W	62° 35' 50"	5,179.000	245.257	S 62° 45' 54" W	1,102.227	1,001.100
1.35	102.432	254.460	N 56° 50' 14" W	62° 35' 50"	5,179.000	245.257	S 62° 45' 54" W	1,102.227	1,001.100
1.36	102.432	254.460	N 56° 50' 14" W	62° 35' 50"	5,179.000	245.257	S 62° 45' 54" W	1,102.227	1,001.100
1.37	102.432	254.460	N 56° 50' 14" W	62° 35' 50"	5,179.000	245.257	S 62° 45' 54" W	1,102.227	1,001.100
1.38	102.432	254.460	N 56° 50' 14" W	62° 35' 50"	5,179.000	245.257	S 62° 45' 54" W	1,102.227	1,001.100
1.39	102.432	254.460	N 56° 50' 14" W	62° 35' 50"	5,179.000	245.257	S 62° 45' 54" W	1,102.227	1,001.100
1.40	102.432	254.460	N 56° 50' 14" W	62° 35' 50"	5,179.000	245.257	S 62° 45' 54" W	1,102.227	1,001.100
1.41	102.432	254.460	N 56° 50' 14" W	62° 35' 50"	5,179.000	245.257	S 62° 45' 54" W	1,102.227	1,001.100
1.42	102.432	254.460	N 56° 50' 14" W	62° 35' 50"	5,179.000	245.257	S 62° 45' 54" W	1,102.227	1,001.100
1.43	102.432	254.460	N 56° 50' 14" W	62° 35' 50"	5,179.000	245.257	S 62° 45' 54" W	1,102.227	1,001.100
1.44	102.432	254.460	N 56° 50' 14" W	62° 35' 50"	5,179.000	245.257	S 62° 45' 54" W	1,102.227	1,001.100
1.45	102.432	254.460	N 56° 50' 14" W	62° 35' 50"	5,179.000	245.257	S 62° 45' 54" W	1,102.227	1,001.100
1.46	102.432	254.460	N 56° 50' 14" W	62° 35' 50"	5,179.000	245.257	S 62° 45' 54" W	1,102.227	1,001.100
1.47	102.432	254.460	N 56° 50' 14" W	62° 35' 50"	5,179.000	245.257	S 62° 45' 54" W	1,102.227	1,001.100
1.48	102.432	254.460	N 56° 50' 14" W	62° 35' 50"	5,179.000	245.257	S 62° 45' 54" W	1,102.227	1,001.100
1.49	102.432	254.460	N 56° 50' 14" W	62° 35' 50"	5,179.000	245.257	S 62° 45' 54" W	1,102.227	1,001.100
1.50	102.432	254.460	N 56° 50' 14" W	62° 35' 50"	5,179.000	245.257	S 62° 45' 54" W	1,102.227	1,001.100

REGISTER'S OFFICE) ss 949271
 Western Co. No. 110
 RECEIVED FOR RECORD THE 26th DAY
 MAY A. D. 1975 AT 10:30 A.M.
 OF LOCKPORT, ILLINOIS
 BY
 [Signature]



LOT	ARC	CHORD
1	158.000	137.60
2	176.370	124.40
3	63.047	62.63
4	62.317	60.58
5	90.825	63.36
6		
7	28.747	28.71
8	65.268	60.18
9	93.850	63.07
10		
11	107.440	64.04
12	60.870	32.60
13	63.422	70.10
14	51.400	48.24
15	45.820	44.74
16	40.102	46.52
17	28.227	27.09
18	42.441	63.30
19	120.825	119.24
20	51.565	51.57
21	100.464	103.73
22	28.117	27.87
23	281.020	30.64
24	210.027	51.50
25	200.000	63.61
26	210.000	63.61
27	210.000	63.61
28	210.000	63.61
29	210.000	63.61
30	210.000	63.61
31	210.000	63.61
32	210.000	63.61
33	210.000	63.61
34	210.000	63.61
35	210.000	63.61
36	210.000	63.61
37	210.000	63.61
38	210.000	63.61
39	210.000	63.61
40	210.000	63.61