

Still Point

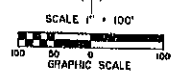
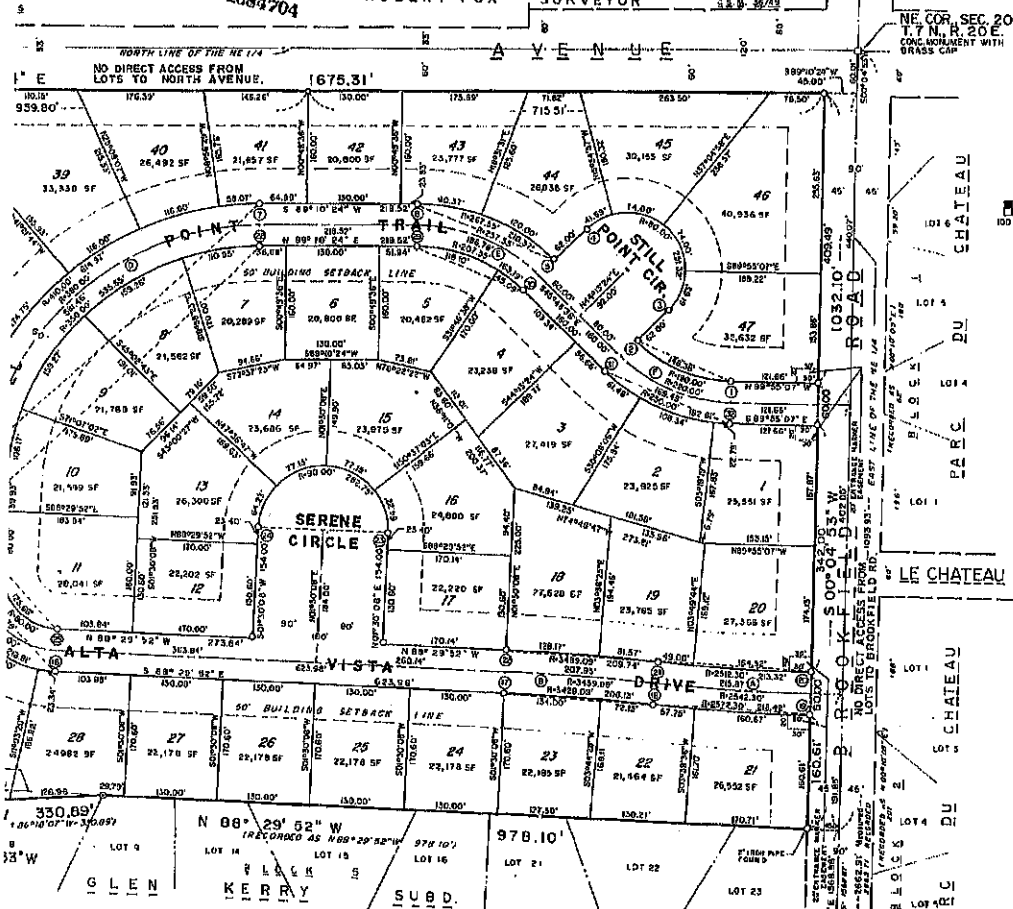
BEING A REMAPPING OF LOTS 7 & 8 BLOCK 5 OF GLEN KERRY SUBD. TOGETHER WITH THOSE LANDS LOCATED IN THE NW 1/4 AND THE NE 1/4 OF THE NE 1/4 OF SECTION 20, T.7N. R.20E., CITY OF BROOKFIELD, WAUKESHA COUNTY, WISCONSIN.

ROBERT FOX SURVEYOR

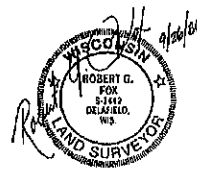
1384704

S. & W. 33/63

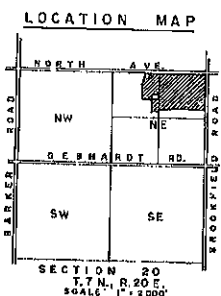
TANGENT	ARC	CHORD
2.8500 13" W		
11.0222 35" W		
10.7330 35" E		
13.7710 24" E		
1.4546 31" E		
1.8725 31" E		



ALL BEARINGS ARE REFERENCED TO GRID NORTH OF THE WISCONSIN STATE PLANE COORDINATE SYSTEM SOUTH ZONE.



DATED THIS 26th DAY OF SEPTEMBER, 1986
REVISED THIS 27th DAY OF OCTOBER, 1986



D A T A

CONVE	LOT	RADIUS	ARC	CHORD	TANGENT	CHORD BEARING	TANGENT BEARING	TANGENT DIST.
11-18	25	2489.00	898.11	03887.39	103.10	258.10	S89°48'32.5" E	S89°23'30" E
12-13	26	2572.50	776.13	03114.18	38.00	126.15	S89°48'32.5" E	S89°23'30" E
13-14	27	2572.50	776.13	03114.18	38.00	126.15	S89°48'32.5" E	S89°23'30" E
14-15	28	2572.50	776.13	03114.18	38.00	126.15	S89°48'32.5" E	S89°23'30" E
15-16	29	2572.50	776.13	03114.18	38.00	126.15	S89°48'32.5" E	S89°23'30" E
16-17	30	2572.50	776.13	03114.18	38.00	126.15	S89°48'32.5" E	S89°23'30" E
17-18	31	2572.50	776.13	03114.18	38.00	126.15	S89°48'32.5" E	S89°23'30" E
18-19	32	2572.50	776.13	03114.18	38.00	126.15	S89°48'32.5" E	S89°23'30" E
19-20	33	2572.50	776.13	03114.18	38.00	126.15	S89°48'32.5" E	S89°23'30" E
20-21	34	2572.50	776.13	03114.18	38.00	126.15	S89°48'32.5" E	S89°23'30" E
21-22	35	2572.50	776.13	03114.18	38.00	126.15	S89°48'32.5" E	S89°23'30" E
22-23	36	2572.50	776.13	03114.18	38.00	126.15	S89°48'32.5" E	S89°23'30" E
23-24	37	2572.50	776.13	03114.18	38.00	126.15	S89°48'32.5" E	S89°23'30" E
24-25	38	2572.50	776.13	03114.18	38.00	126.15	S89°48'32.5" E	S89°23'30" E
25-26	39	2572.50	776.13	03114.18	38.00	126.15	S89°48'32.5" E	S89°23'30" E
26-27	40	2572.50	776.13	03114.18	38.00	126.15	S89°48'32.5" E	S89°23'30" E
27-28	41	2572.50	776.13	03114.18	38.00	126.15	S89°48'32.5" E	S89°23'30" E
28-29	42	2572.50	776.13	03114.18	38.00	126.15	S89°48'32.5" E	S89°23'30" E
29-30	43	2572.50	776.13	03114.18	38.00	126.15	S89°48'32.5" E	S89°23'30" E
30-31	44	2572.50	776.13	03114.18	38.00	126.15	S89°48'32.5" E	S89°23'30" E
31-32	45	2572.50	776.13	03114.18	38.00	126.15	S89°48'32.5" E	S89°23'30" E
32-33	46	2572.50	776.13	03114.18	38.00	126.15	S89°48'32.5" E	S89°23'30" E
33-34	47	2572.50	776.13	03114.18	38.00	126.15	S89°48'32.5" E	S89°23'30" E

E 1/4 CORNER, SECTION 20 - CONC. MONUMENT WITH BRASS CAP

LEGEND

- - INDICATES A 2"x30" ROUND IRON PIPE WEIGHING 3.45 LBS./FT.
- ⊙ - INDICATES A 1" ROUND IRON PIPE MONUMENT FOUND.
- ALL OTHER LOT CORNERS ARE MARKED BY A 1"x 24" ROUND IRON PIPE WEIGHING 1.19 LBS./FT.
- ALL DISTANCES, LENGTHS AND WIDTHS ARE MEASURED TO THE NEAREST HUNDREDTH OF A FOOT.
- DISTANCES SHOWN ALONG CURVES ARE ARC LENGTHS.